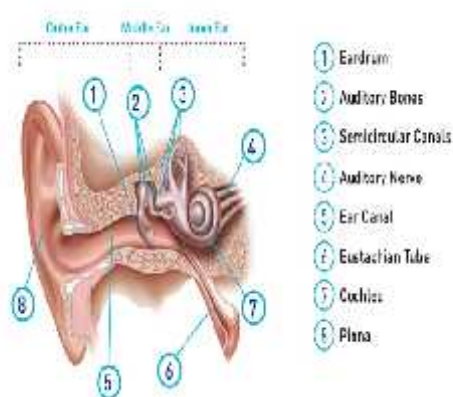


## WHAT IS DEAFNESS OR HEARING LOSS?



Hearing impairment, deafness, or hearing loss refers to the total or partial inability to hear sounds. Symptoms may be mild, moderate, severe, or profound. ... Some people are severely deaf and rely on lip-reading to communicate with others.

### TYPES OF DEAFNESS DISORDERS

- Auditory Processing Disorders.
- Conductive.
- Sensorineural.
- Mixed.

### CAUSES OF HEARING LOSS

- Aging.
- Injury.
- Excessive noise exposure.
- Viral infections (such as measles or mumps)
- Shingles.
- Ototoxic drugs (medications that damage hearing)
- Meningitis.
- Diabetes.

### SYMPTOMS OF HEARING LOSS MAY INCLUDE:

- Muffling of speech and other sounds.
- Difficulty understanding words, especially against background noise or in a crowd.
- Trouble hearing consonants.
- Frequently asking others to speak more slowly, clearly and loudly.
- Needing to turn up the volume of the television or radio.

### NEUROTHERAPY TREATMENT

- If hearing loss is due to medicines:  
Inflammation treatment formula

- If hearing loss is due to cold :

Treatment: Reetha chakra

'ad Akk

- If hearing loss is due to other reasons:

First day		M – Heparin
Second day	I	(3) Gal
		(7) Liv

After ½ hour

Third day                      II              1, 25 DCC  
Normal – Ajay Normal formula

Give this treatment for 2 months

- (4) Pit
  - (3) Thyroid
  - (4) Adr
  - (4) Ku
  - (6) Back
  - (3) Hearing arrow
- Hard of hearing points